

Professional Partner Program



WHAT IS THE PROFESSIONAL PARTNER PROGRAM

The Professional Partner Program is based on a commitment to support youth and families in all aspects of life. The Professional Partner Program utilizes the Wraparound approach, which relies on the natural support systems of the family in its community.

Wraparound ensures that services are provided to youth that are tailored towards building strengths, promoting success, safety, and permanency in home, school, and the community.

The purpose of the Professional Partner Program is to help families of children who have or may have a mental health diagnosis in accessing supports and services.



HOW CAN WE HELP?

The Professional Partner Program is a partnership between the family and Professional Partner, where the parents-and youth- are equal partners in all aspects of planning and care. The Professional Partner will work with families to create a team of people who are there to support them in reaching their goals. Through a family-centered team effort, the Professional Partner will assist in the family in identifying needs and creating goals. The Professional Partner will then help the family in accessing services and supports to address their needs. The wraparound team will work together to make sure that everyone is on the same page and working towards the same goals.

In addition, families are provided:

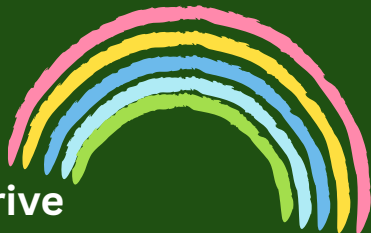
- + Families are provided with a list of resources that are available to them 24 hours a day.
- + One on one support for the youth enrolled.
- + Advocacy and support in all aspects of life.
- + Flexible schedules and locations to best meet family's needs



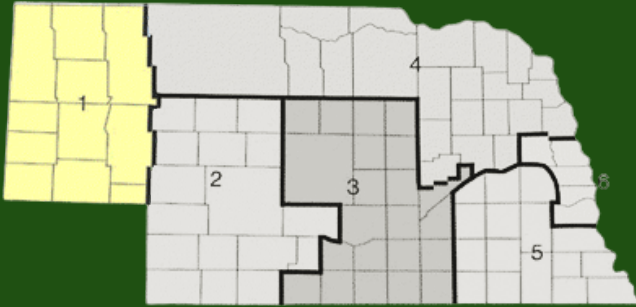
Region 1
Behavioral Health Authority

PROFESSIONAL PARTNER PROGRAM

Helping Families Thrive



Serving all 11 counties of the Panhandle



Banner • Box Butte • Cheyenne •
Dawes • Deuel • Garden • Kimball •
Morrill • Scotts Bluff • Sheridan • Sioux



This project is 100% funded from the Nebraska State Block Grant, grant 88434-Y3 through SAMHSA contracted through the Nebraska Department of Health and Human Services, Division of Behavioral Health.

Who is Eligible



- + Youth between ages 3-25
- + Youth with a mental health diagnosis
- + Youth who have one or more of the following risk factors:
 - a) being placed out of the home
 - b) becoming a state ward
 - c) co-occurring disorders
 - d) dropping out of school

Anyone can refer a youth to the Professional Partner Program, including a family member. We will contact the youth/family directly to determine their interest and eligibility.

Questions? Please call 308-635-3173

You can submit the completed referral form as follows:

Online at:

<https://region1bhs.net/professionalpartner-program/>

Fax to: 308-632-2326



Mission Statement

To utilize the wraparound approach to coordinate services and supports for families who have children/adolescent with a serious emotional disturbance and to ensure that the families have a voice, ownership and access to a comprehensive, individualized support plan.



LOCATIONS:

4110 Avenue D
Scottsbluff, NE 69361

312 Main Street
Oshkosh, NE 69154



Contact Us :

308-635-3173

www.region1bhs.net